

1 OVERALL FLOOR PLAN SCALE: 1/64" = 1'-0"



LOCUST GROVE DC BUILDING 1

LOCUST GROVE, GA

©2018, Nelson Worldwide, LLC through its subsidiary Wakefield Beasley & Associates Architects, Inc. These drawings are protected by the copyright laws of the United States. These drawings or any part thereof may not be used for any purpose or reproduced in any form or by any means without the written consent of Nelson Worldwide, LLC.

Print Record table with columns for Date, Job No., and Description. Entries include 2018 JUNE 20 FLOOR PLAN REVIEW and 2018 JUL 23 REVIEW SET.

Revisions table with columns for Description, Date, and Job No. It contains several blank rows for revisions.

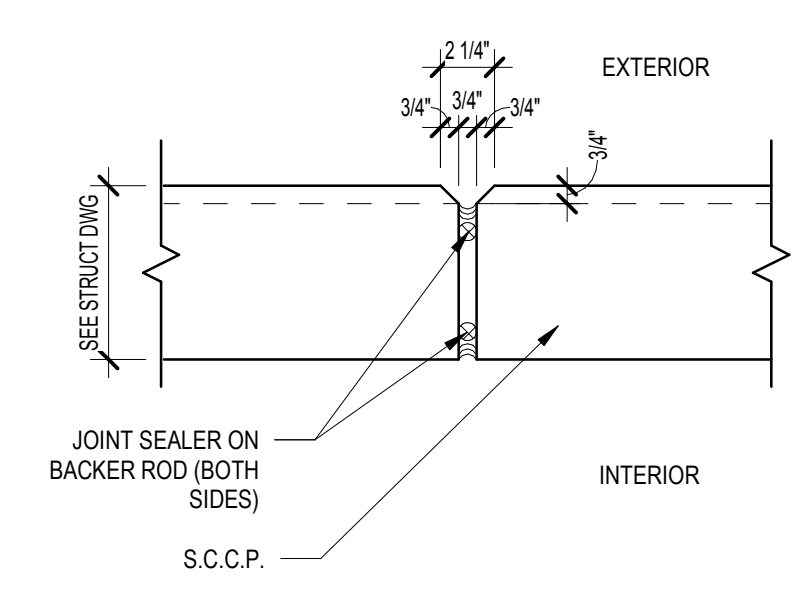
KEYNOTES

- 1 ACCESS LADDER TO CONCRETE ROOF OF ELECTRICAL ROOM - SEE ENLARGED PLANS.
2 9'-0" X 3'-0" ROOF MATCH WITH ACCESS LADDER FROM CONCRETE ROOF AT ELECTRICAL ROOM BELOW. G.C. TO COORDINATE WITH STRUCTURE. PAINTED SAFETY YELLOW - SEE ENLARGED PLANS AND ROOF PLAN.
3 RIDGELINE
4 FIRE PUMP ROOM - 1 HOUR RATED
5 ELECTRICAL ROOM - 1 HOUR RATED
6 9'-0" X 10'-0" DOCK DOOR
7 12'-0" X 14'-0" DRIVE-IN RAMP DOOR
8 RAMP GUARDRAIL - SEE DETAILS 4, 11 & 12 ON A-401
9 5'-0" X 5'-0" CONCRETE PAD, SLOPE AWAY FROM BUILDING AT 2% SLOPE.
10 9" X 9" X 24 GAUGE METAL DOWNSPOUTS WITH KYNAR FINISH
11 RECESSED CAN LIGHT IN SOFFIT ABOVE
12 K-BRACING TO 14'-0" A.F.F. AT COLUMN LINES 9, 18, AND 25 BETWEEN COLUMN LINES B AND M
13 10'-0" POURBACK STRIP

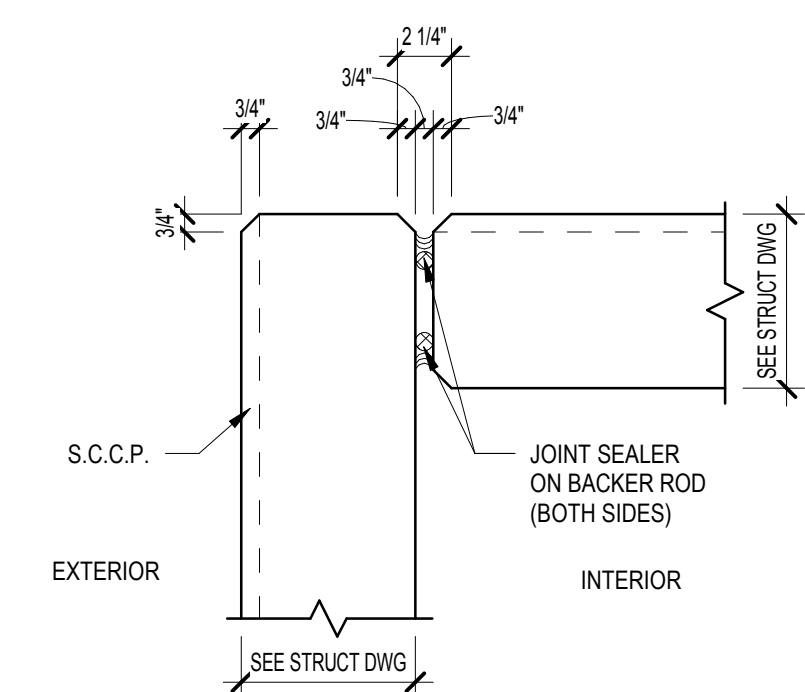
GENERAL NOTES

- 1. BUILDING TO BE 40' CLEAR JUST PAST THE FIRST COLUMN LINE IN FROM THE DOCK WALL.
2. SLAB CONTROL JOINTS TO BE SAWCUT AND NOT TO EXCEED 17' ON CENTER. SLAB CONTROL JOINTS TO HAVE PNA P33 DOWEL BASKETS, SIZED AND SPACED PER ACI RECOMMENDATIONS. PROVIDE VERSAFLEX SL 75 HIGH TRAFFIC SEALANT AT ALL SPEED BAY FLOOR SLAB CONTROL JOINTS. - SEE STRUCTURAL DRAWINGS FOR FLOOR SLAB CONTROL JOINTS.
3. SLAB CONSTRUCTION JOINTS TO HAVE DIAMOND DOWELS SIZED AND SPACED PER ACI RECOMMENDATIONS - SEE STRUCTURAL DRAWINGS.
4. SLAB WILL BE CURED WITH A WATER-BASED DISSIPATIVE CURING COMPOUND AND WILL RECEIVE ONE COAT OF SONNEBORNE LAPIDOLITH FLOOR HARDENER.
5. SLAB ON GRADE WILL BE PRE-TREATED WITH TERMITICIDE.
6. 10-MIL VAPOR BARRIER TO BE PROVIDED BELOW THE SLAB ON GRADE THROUGHOUT. SEAMS AND PENETRATIONS TO BE SEALED AND TAPED.
7. 7" THICK UNREINFORCED, 4,000 PSI CONCRETE SLAB BEARING ON 6" OF RECYCLED CONCRETE BASE (OR STONE) SLAB TO RECEIVE HARD TROWEL FINISH AND LASER SCALED SHALL BE UTILIZED TO ATTAIN MINIMUM LOCAL & OVERALL SLAB TOLERANCE OF FF 35/FL 25. (PROVIDE ADD ALTERNATE FOR DUCTILE CONCRETE FLOOR SLAB).
8. PROVIDE A ESFR SPRINKLER SYSTEM THROUGHOUT.
9. PROVIDE PORTABLE FIRE EXTINGUISHERS OF THE QUANTITY AND AT THE LOCATIONS AS INDICATED OR AS REQUIRED BY THE AUTHORITY HAVING JURISDICTION. EXTINGUISHERS SHALL BE EQUAL TO J.L. INDUSTRIES COSMIC 10E, 10 POUND, 4A-60BC. TO BE COORDINATED WITH OWNERS LAYOUT.
10. METAL ROOF DECK SHALL BE 1-1/2" TYPE "B" WIDE RIB DECKING SHOP PRIMED WHITE - SEE STRUCTURAL DRAWINGS.
11. RACKING, FLOOR STORAGE AND EQUIPMENT BY OTHERS.
12. SEE ELEVATIONS FOR GLASS SCHEDULE.
13. ALL BOLLARDS TO BE PAINTED SAFETY YELLOW. (PROVIDE BOLLARDS AT ALL DRIVE-IN OVERHEAD DOOR JAMBS, FIRE PROTECTION RISERS, ELECTRICAL TRANSFORMERS AND EXPOSED ELECTRICAL PANELS).
14. ALL BOLLARDS SHALL BE 6" O.D. SCHEDULE 80 STEEL PIPE SET MINIMUM 2'-0" DEEP IN 2'-0" DIAMETER CONCRETE FOOTING WITH PIPE EXTENDED 4'-0" ABOVE PAVING OR FLOOR. FILL PIPE WITH CONCRETE AND DOME TOP - FOOTING TO BE IN SOWTUSE.
15. ROOF ASSEMBLY: SINGLE PLY 45 MIL WHITE TPO MEMBRANE SYSTEM MECHANICALLY FASTENED OVER R-20 ROOF INSULATION OVER 1-1/2" METAL DECK. 15-YEAR NDL WARRANTY. MINIMUM I-60 ROOF SYSTEM. (PROVIDE ADD ALTERNATE FOR 60 MIL AND R-15)
16. ALL STAIRS AND RAILINGS TO BE GALVANIZED.
17. ALL SITE CAST CONCRETE PANEL WIDTHS ARE TO CENTERLINE OF CONCRETE PANEL VERTICAL JOINT U.N.O.
18. ALL TILT WALL PANELS SHALL BE CAULKED TO FULL HEIGHT, BOTH SIDES, WITH TREMCO DYMERIC POLYURETHANE OR EQUAL WITH BACKER ROD BEHIND THE CAULK. (EXTERIOR) ALL S.C.C.P. SHALL RECEIVE A TEXTURED ACRYLIC COATING SIMILAR TO SHERWIN WILLIAMS ULTRACRETE (MEDIUM TEXTURE) WITH ACCENT STRIPING. SEE ELEVATIONS.
19. (INTERIOR) ALL S.C.C.P. PANELS WILL BE HARD TROWEL FINISHED WITH CAPPED PICK AND BRACE POINTS. (PROVIDE ADD ALTERNATE TO PAINT THE INTERIOR SIDE OF THE EXTERIOR S.C.C.P. PANELS WHITE).
20. PROVIDE X AIR CHANGES PER HOUR USING UPBLAST FANS AND INTERLOCKED LOUVERS - SEE ELEVATIONS AND MECHANICAL DRAWINGS.
21. PERSONNEL DOORS AND MISC. METALS SHALL RECEIVE ONE (1) PRIMER COAT AND ONE (1) FINISH COAT OF ENAMEL.
22. ALL STRUCTURAL STEEL TO PRIME PAINTED WITH A COAT OF LIGHT GRAY PAINT. ALL STRUCTURAL STEEL SHALL BE TOUCHED UP AT THE COMPLETION OF THE PROJECT. (PROVIDE ADD ALTERNATE TO PAINT THE INTERIOR STRUCTURAL COLUMNS YELLOW UP TO 10'-0" A.F.F.)

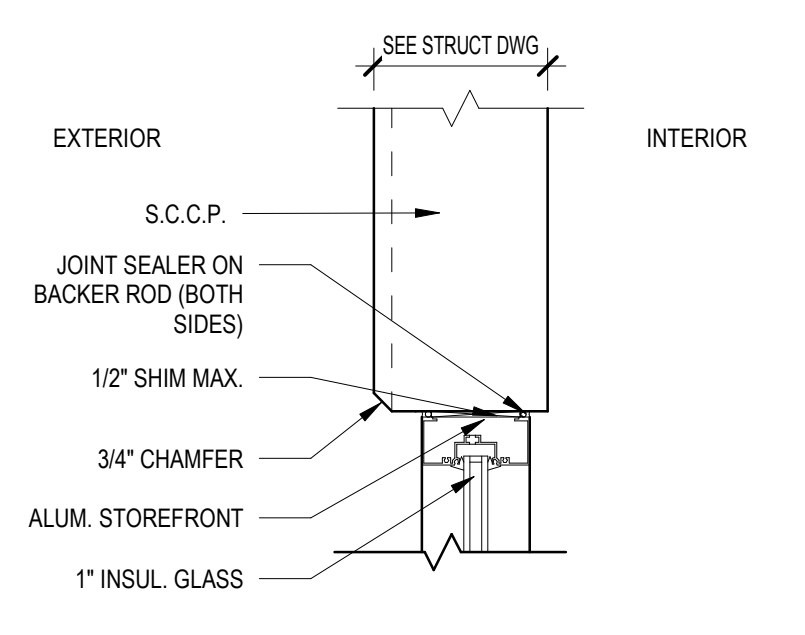
5 TYPICAL S.C.C.P. JOINT DETAIL SCALE: 1 1/2" = 1'-0"



4 TYPICAL S.C.C.P. CORNER DETAIL SCALE: 1 1/2" = 1'-0"



3 TYPICAL S.C.C.P./ SF DETAIL SCALE: 1 1/2" = 1'-0"



2 TYP. S.C.C.P. MITERED CORNER SCALE: 1 1/2" = 1'-0"

